

# The Queensland Hearing Loss Family Support Service

## Lockhart River Project

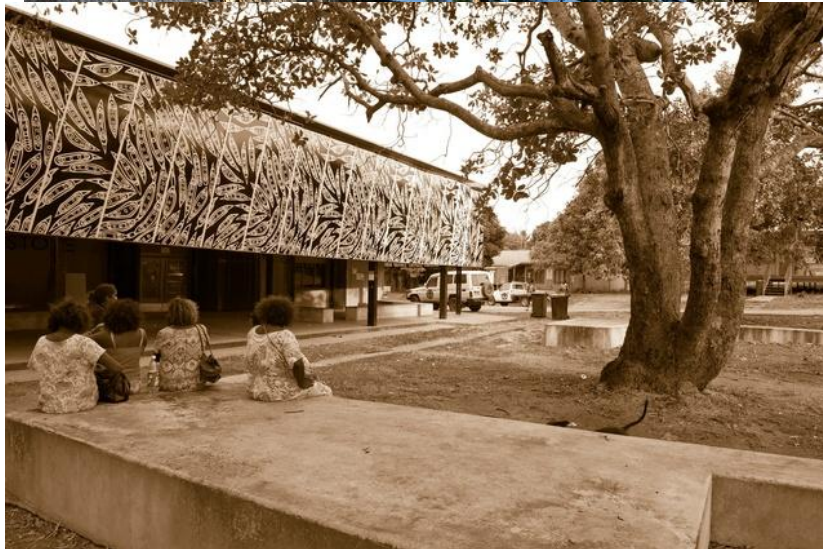
*Working within a Community Development Framework across Agency lines with the goal of mitigating the impact of hearing loss on the child, family, and their community*

Community Development Worker -Selma Kum Sing

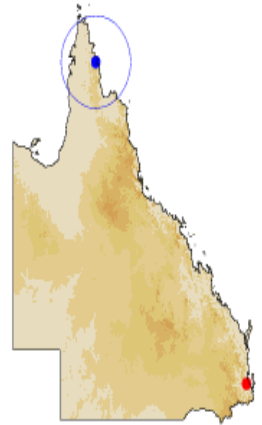
Child Health Nurse RFDS - Karen Drury



# Lockhart River Aboriginal Community



Total population  
3318



# Where it began..

## \* What was happening in Lockhart River

EQ working with Health Centre – coordinate school screening (Apunipima – Audiologist)

Qld Hearing Loss Family Support Service – working with families

## \* Who was talking about it

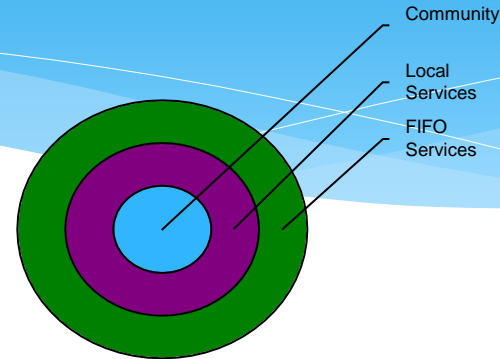
Education Qld <-> Lockhart River Health Centre –  
RFDS Child Health Nurse, Health Worker  
RFDS-> Council

## \* Who Where the Key Partners

Education Qld – AVT HI, Guidance Officer (Local/FIFO)

Qld Health & RFDS

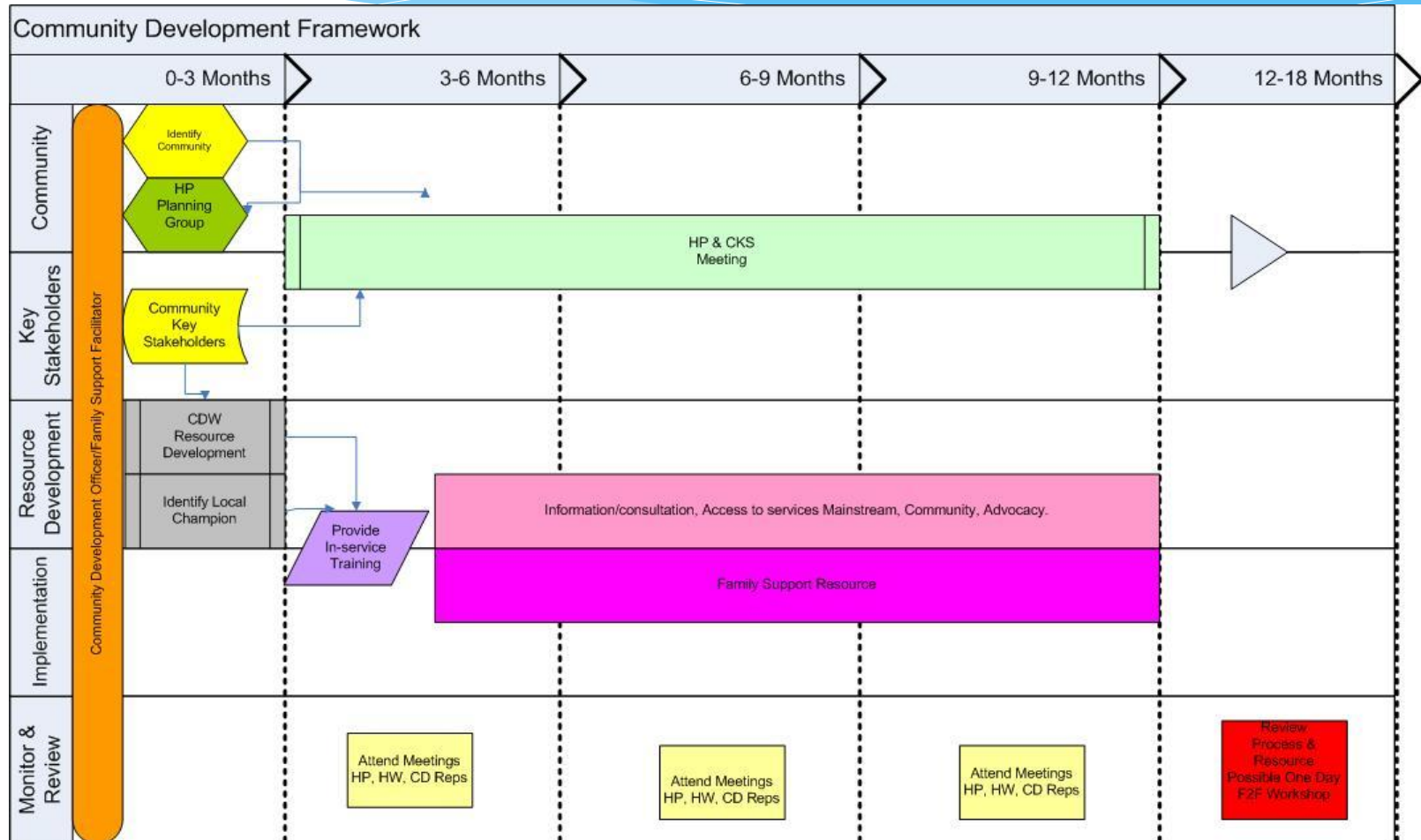
Council – Community Development, Apunipima



## ISSUES

- \* 80% of students failed School Hearing Screening
- \* Children with PHL
- \* 20 children with verified hearing impairment
- \* No programs or strategies in place
- \* No Community awareness
- \* No Community Involvement

# Community Development Plan



# Clinical & Community Approach

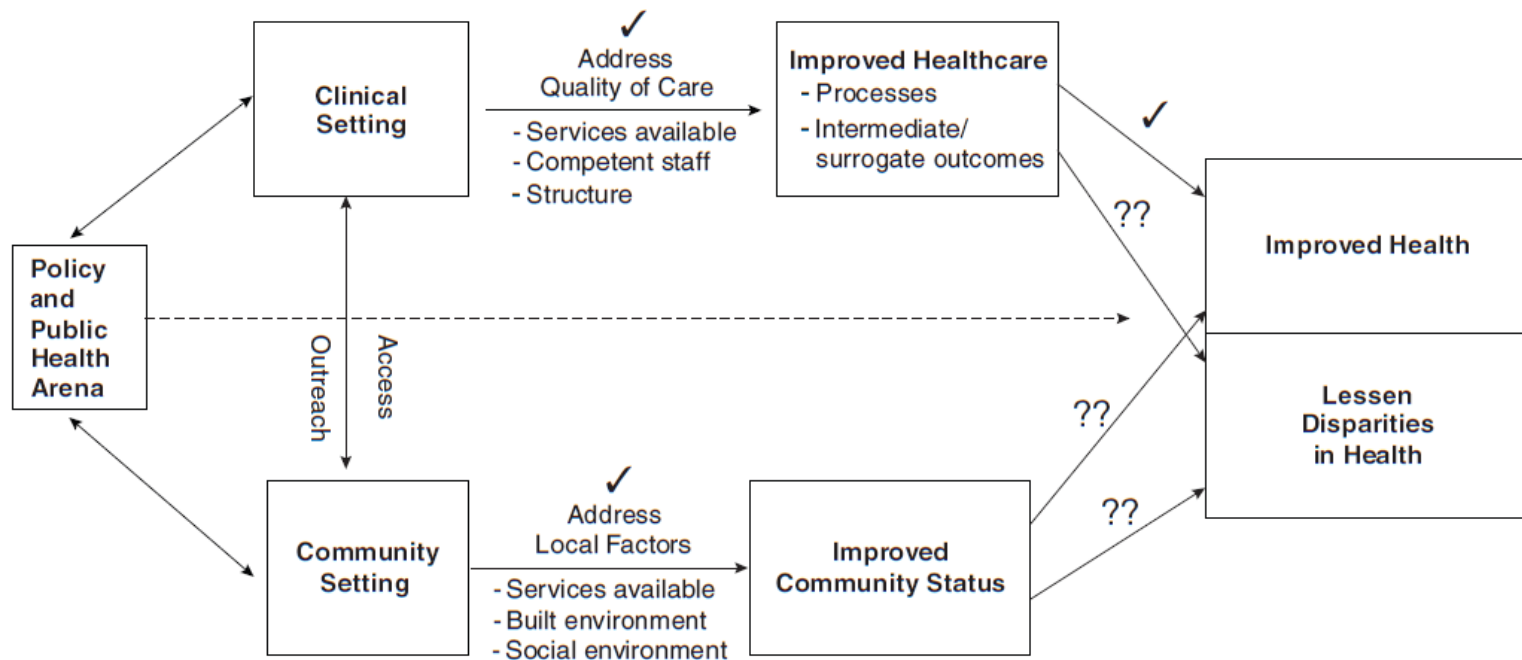


FIGURE 3-1 The “two paths” of community approaches to disparities.

# Wish List

- \* Establish a network of services, community members targeting Ear health & hearing loss.
- \* Raise awareness & Mobilise the community
- \* Improve collaboration of service delivery
- \* Provide educational information, resources and skill development programs to families and community based services
- \* Work together & sustain the working relationship



# Action Plan

Community	Communication	Health Education	Stakeholders	Infrastructure
Community Awareness/Education Champions	Strategies that acknowledge hearing loss and second language contexts to minimise communication breakdown	Practical strategies to deal with hearing loss e.g. breathe, blow, and cough.	Regular Meetings with key stakeholders	More community control of health culturally appropriate approaches
Health Promotion Event Whole of community approach.	Regular communication between all stakeholders	Information to increase awareness about general health and wellbeing and the impact on hearing loss & disease.	Discussions regarding how best to communicate ideas etc. to the community. What really works	. **School provides Sound Field System
Effects of hearing loss - education, social & emotional, recreational activities sports, dancing etc.	Discussion regarding how best to communicate ideas etc. to the community. What really works?	Effects of Smoking Importance of breast feeding	Continuation and development of the Hearing Network Group Develop Partnerships	Working in partnership with key organisations - health. Education, council, family support services, library
Whole of community approach	Education with parents regarding impact of hearing health on learning & communication	Target young mothers groups, parents as First Teachers, Playgroup.	Continuation with absolute commitment to collaborative work	Access to cheaper tissues/toilet paper to promote nose blowing in community
Identified community health issues to be incorporated into community health plan.	Increased emphasis on reading and being read to by parents	Develop local resources - common hand signals used by locals.	Communication Strategy - Council & other key organisations	Lobby for cheaper cleaning products to promote hygiene
Involve community & grow support	Incorporate humour as a major education tool & positivity to get the message across	Increasing knowledge and understanding of the impact of hearing loss	Involve parents & community members	Lobby for more housing in community
Promote good hygiene practice - Whole of community approach		Encouraging parents to care appropriately for perforated ears -		lobby for swimming pool so swimming in clean water is promoted versus the creek

Green

Orange

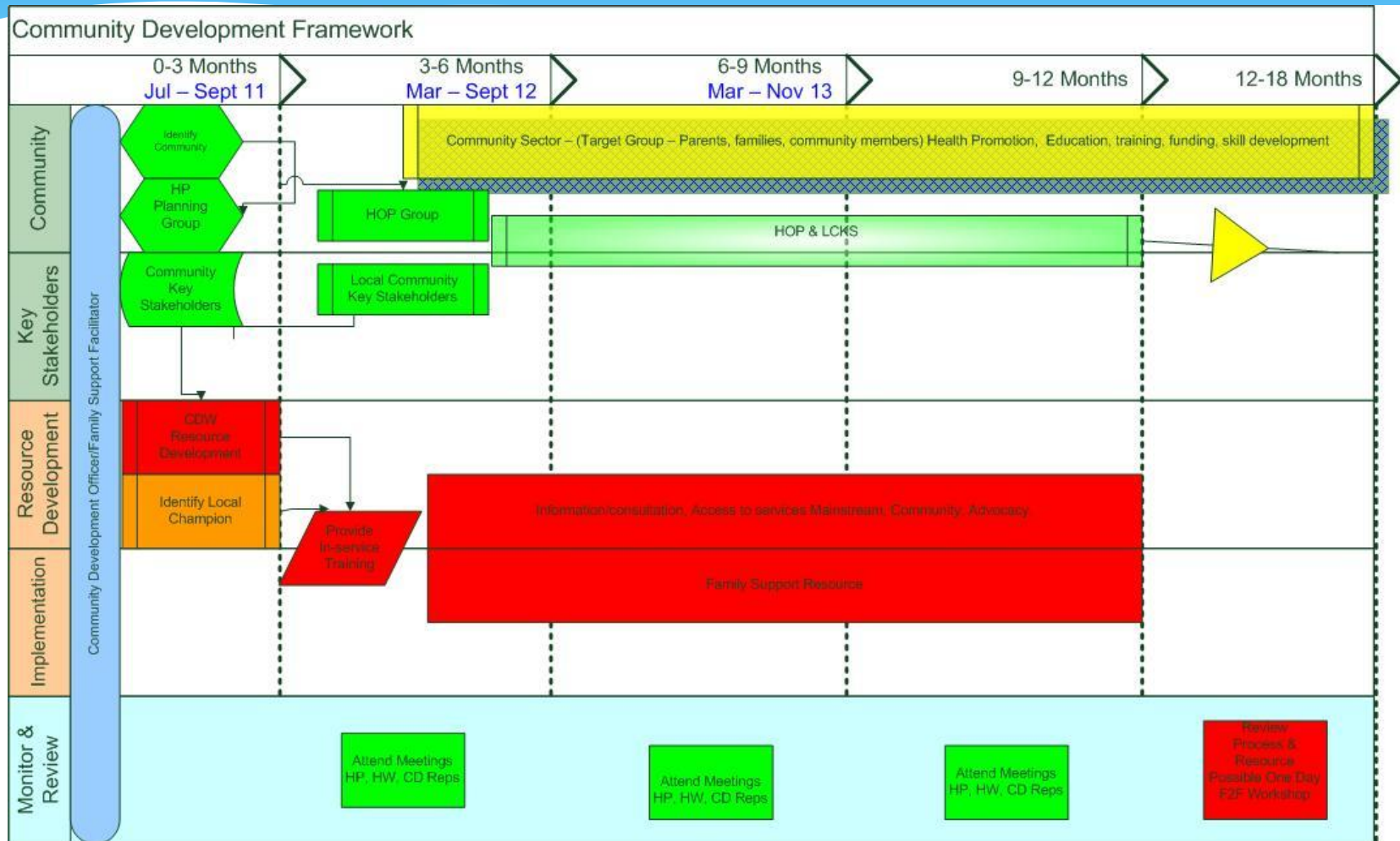
Red

Currently in place

Strategies or projects are support these strategies

Work in Progress

# Community Development Plan - Actuals





# Big Thulinga Day

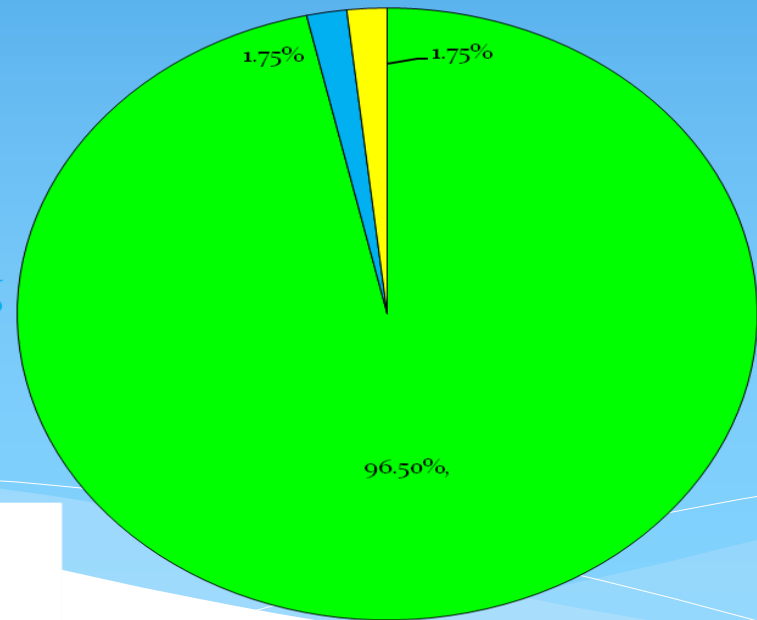
## Feedback from Students

75% of student attended, Over 90% of children enjoyed the Big Thulinga Day

10 Workstations all to do with Ears

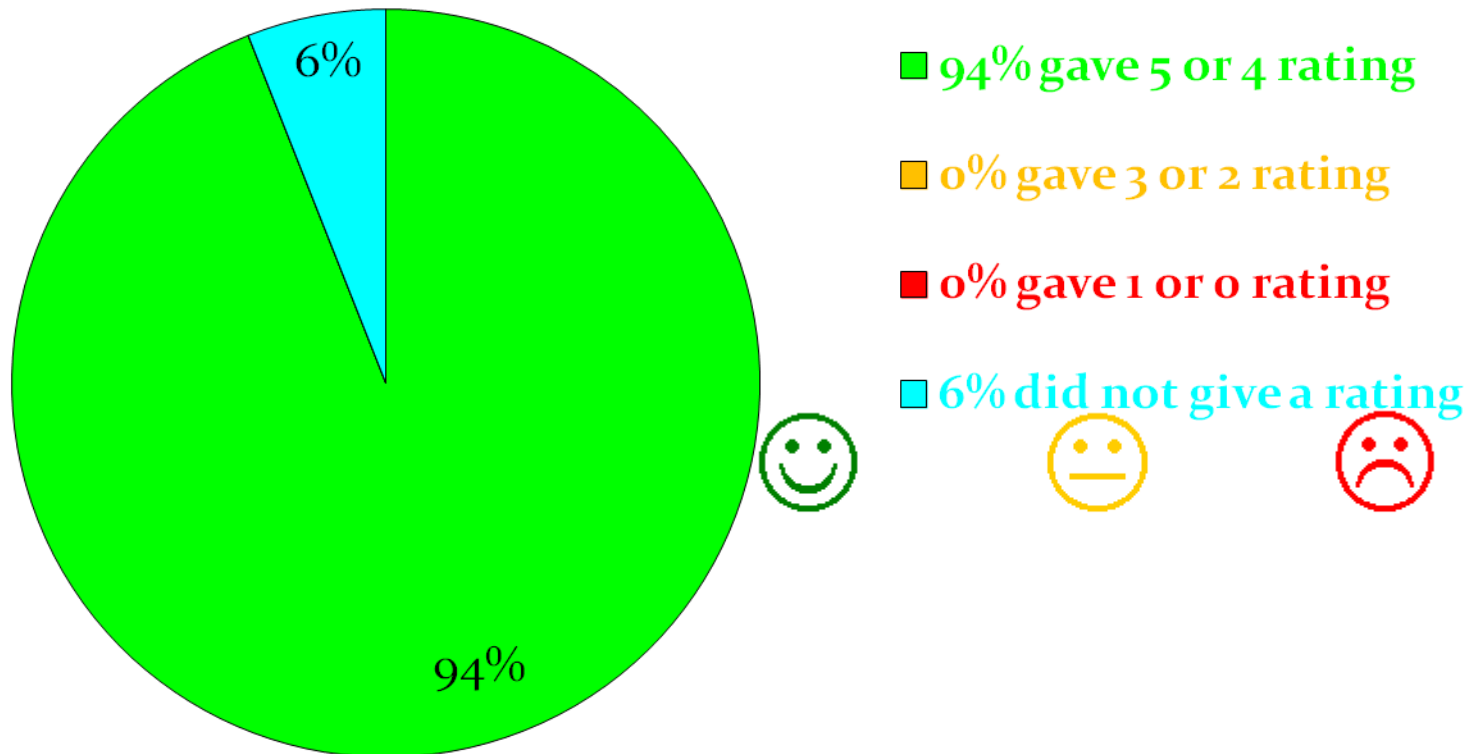
85% Recall of Health Messages

96.5% gave 5 or 4 rating  
1.75% gave 3 or 2 rating  
0% gave 1 or 0 rating  
1.75% did not give a rating



# Community Concert

\* Over 200 people attended, 94% enjoyed the Concert



# Community Feedback

- \* Enjoyed kids getting rewards for reading
- \* Young mothers didn't know
- \* Was the right time to inform parents while everyone here
- \* Mothers have to look after their babies
- \* 1<sup>st</sup> time I heard this information
- \* I was so pleased that all the kids and parents got these messages in a way that will be retained and it was practical advice that can be done at home
- \* No HACC bus service for Elders
- \* Enjoyed it. Mothers being there for the kids. It was really good
- \* its been a while since we had a concert, everybody coming. Especially the parents
- \* Lots of people turned up
- \* Really good, I enjoyed listening to the whole thing
- \* The concert - great singing, all children got their awards
- \* Singing and the dancing, it was good to see more parent here with the kids.

# What did we learn

- \* Partnerships
- \* Community Connections
- \* Local Connections & content
- \* Cultural competence
- \* Face value
- \* Resource Development

# Big Thulinga Day

## Activities by Kids Club



**Bubble Painting** activity with Kids Club ran by Beverley Butcher



**Listening Bingo** with Emily and Qld Health



**Facepainting** by Sade Yeomans and teachers Kate and Danielle



**Family Together Mums and Bubs** joined in



**Kids Club/PaCE**  
Christina Butcher ran the Mirror Making activity with Jackie helping as a volunteer



Lorenzo is a Tiger

# Big Thulinga Day

## Activities by Lockhart River State School



**Big Ears Hats**

Special Needs teacher Barbara Wilson



and Secondary Teacher Sandy



**Listening Station** with Jellina



**Blowing bubbles with your nose** with Gavin



**Making Tissue spears** to learn how to clean infected ears, practice on Jelly funnels with Jess



**Balance Obstacle Course, Breath Blow Cough wash hands** with Charmaine Van Eyk



**Reading** with teacher Susan Stannard and Secondary student Dolly Macumboy



**River State School - LUNCH**

Darren Macumboy from the school and volunteer John Van Eyk to helped cook the kebabs on the BBQ for the kids

**Lockhart**



# Community Concert



**Community Development** - and helpers prepared food for the BBQ



**Lockhart River Care Hire** – Paul Piva donated the use of his bus, Seamus Campbell volunteered to pick up the elders for the Concert with **Youth** worker Greita's help.



**Karen Drury** and **Karen Koko** from the **Clinic** presented a skit about ear infections, it was very funny and grabbed everyone's attention.



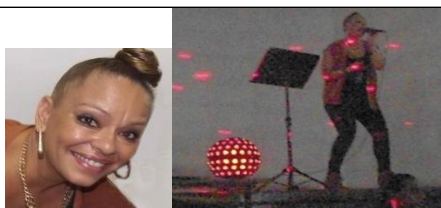
**Lockhart River State School** presented awards to the students with best attendance and achievement



Very good attendance from kids



Very good attendance from Adults



**Selma Kum Sing** from **Qld Health** organised for **Simone Stacey** to perform. Thanks to contributions from **Council, Apunipima, Qld Health** and **Skytrans**



**Lockhart Kawadji-Wimpa Dancers** performed for us before heading off to Melbourne to the Wilin Centre and IDJA Dance Theatre

# Lockhart River Healthy Hearing Network



# What's happening now...

- \* Big Thulinga Day/Health Checks
- \* Big Thulinga Day across Cape York
- \* Community Plan – Kids Club, Playgroup, Early Readers
- \* Puuya Foundation

# Acknowledgement

- \* Dorothy Hobson Traditional Owner & Elder
- \* Wayne Butcher – Mayor & Traditional Owner
- \* Paul Piva – Councillor
- \* Veronica Piva – Councillor
- \* Lockhart River – Elders & Community Members
- \* Healthy Hearing Network members

# References

1. Lockhart River Community Development Project Final Report 2014. Selma Kum Sing 2014
2. Lockhart River Pictures Wikipedia Lockhart River, Queensland
3. Australian Bureau of Statistics –National Regional Profile: Lockhart (A) 2010
4. Challenges and Successes in Reducing Health Disparities Workshop Summary PDF. Jennifer A Cohen, Rapporteur, Roundtable on Health Disparities. 2008
5. Lockhart River Aboriginal Council - Wannta Newsletter Oct 2013