



What do you mean you are declining?

Gaby Kavanagh, Victorian Infant Hearing Screening Program

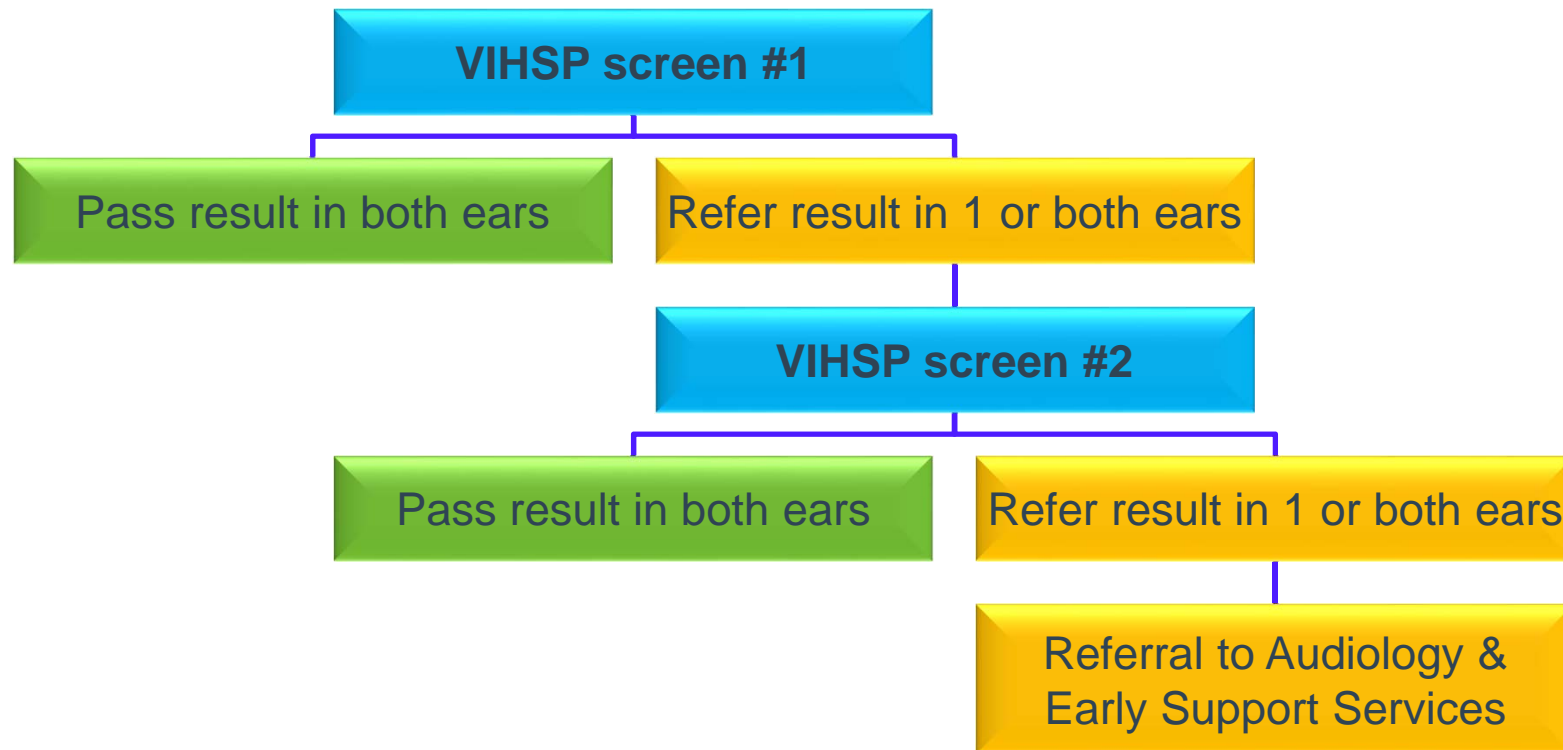
19th June 2015

Analysis of declines from 2011 - 2014



- Determine decline rate
- Analyse case notes
- Identify trends
- Inform program changes

What is decline?



Informed choice



CONSENT

DECLINE

Sufficient information to make choice

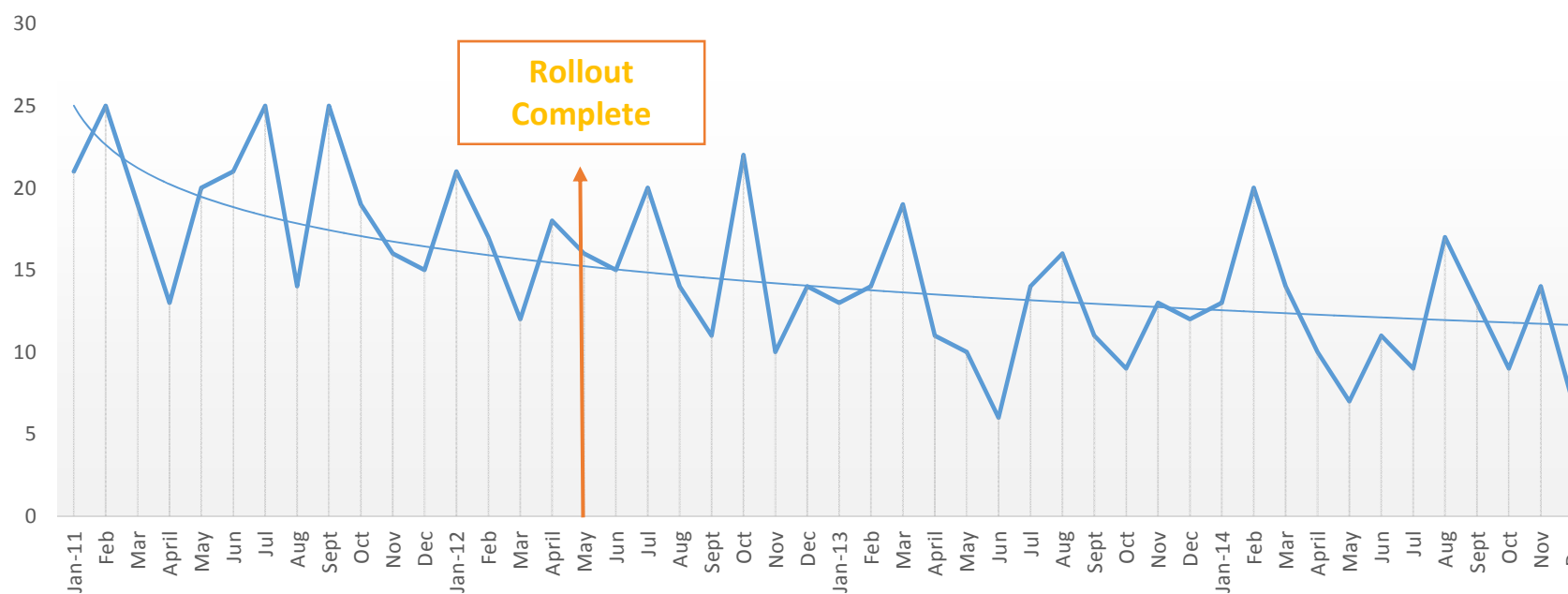
Monitoring



- VIHSP expects and monitors declines

Decline Key Performance Indicator
< 1% of eligible babies

Jan 2011 – Dec 2014



VIHSP decline rate 2011-2014



	Eligible	Screened	Decline	Decline Rate
2011	71,290	70,572	239	0.33%
2012	77,048	76,104	195	0.25%
2013	77,083	76,102	149	0.19%
2014	78,173	77,246	141	0.19%

729

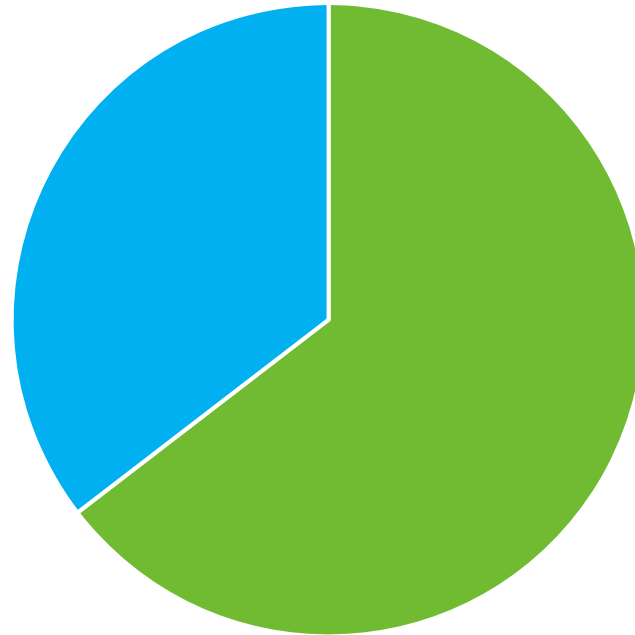
Where? Who? Why?



Where?



- outpatient decline
- inpatient decline

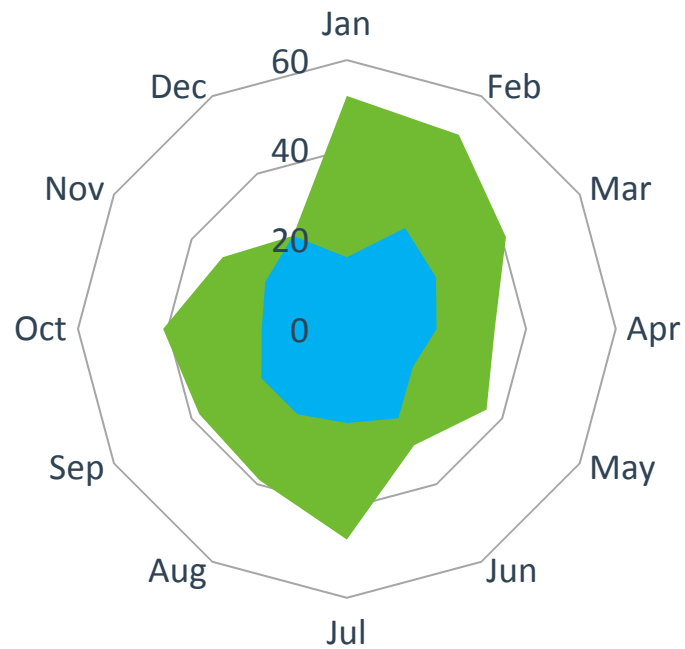




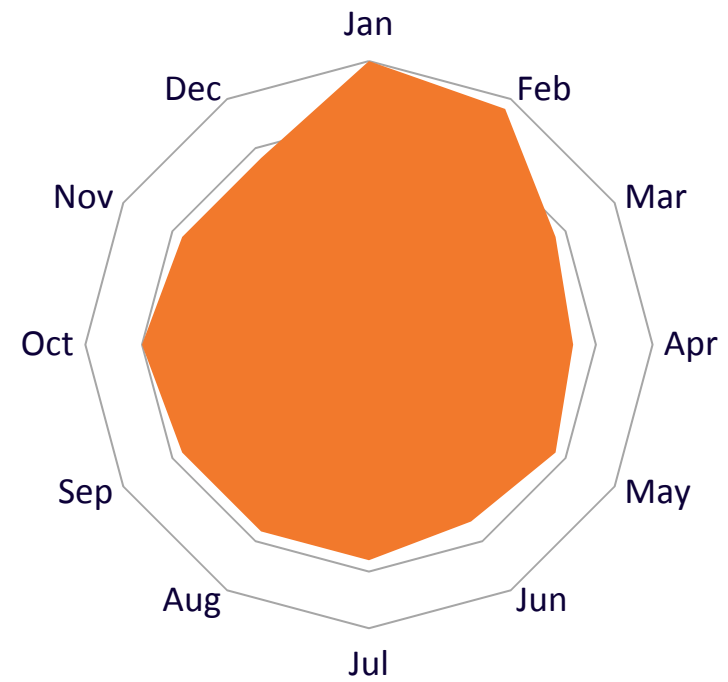
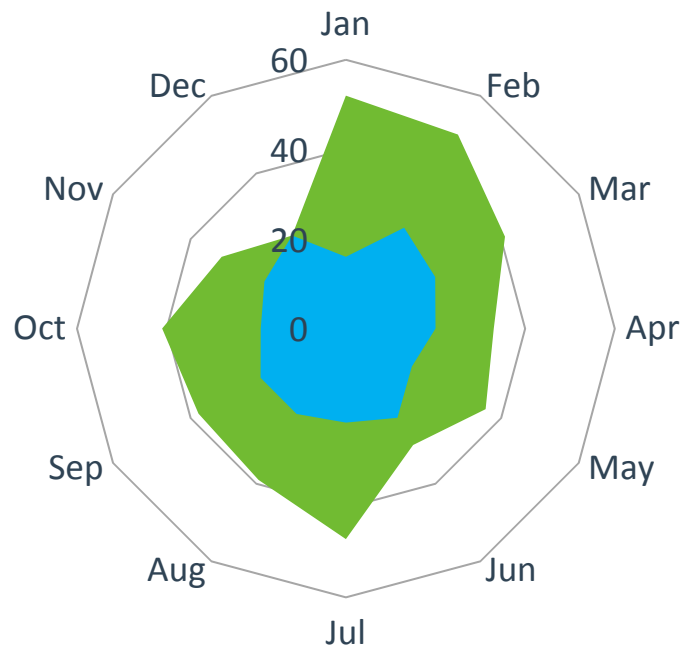
Seasonal influences?



■ outpatient
■ in patient



Maybe not



Location in Pathway



Screening not
commenced



AABR1
Complete



AABR2
Complete

655



62



12

Where? Who? Why?



- Further questions...
 - Inpatients - effective use of time within the postnatal setting
 - Outpatients - communication tools
 - Mobile/drop in centres. Home visits.
 - *My New Baby Organiser* app

Where? Who? Why?



Where? **Who?** Why?



Where? **Who?** Why?



- Further questions
 - Non English Speaking Background – analysis of case notes and LOTE fields inconclusive

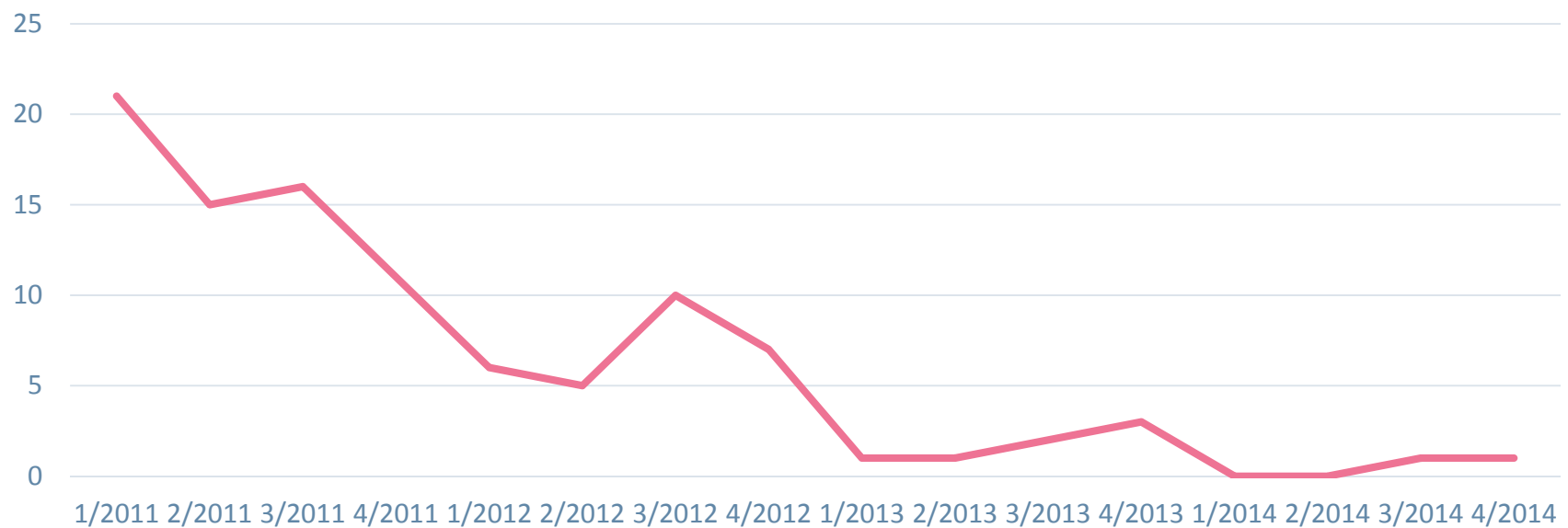
Where? Who? Why?



Where? Who? Why?



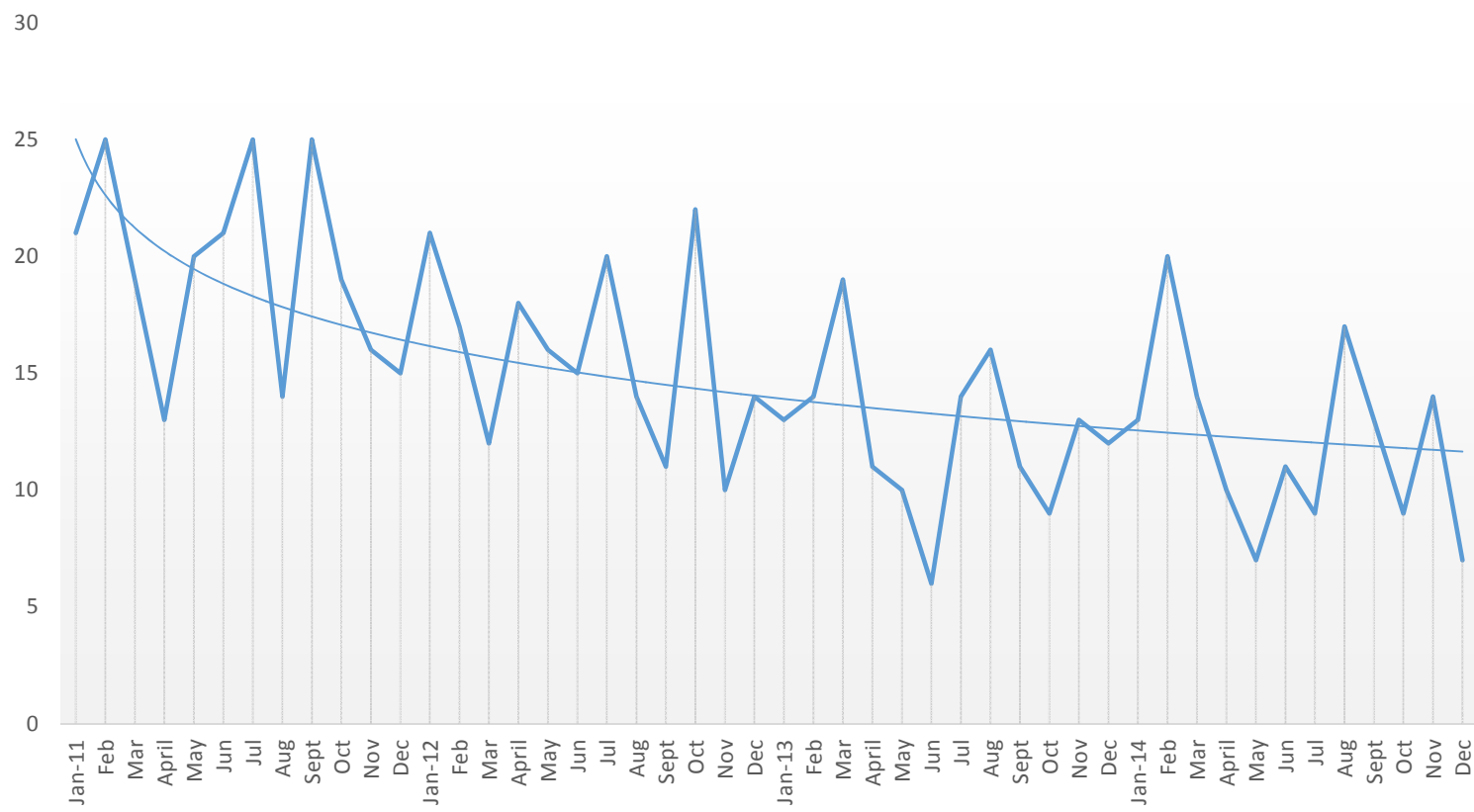
No Case Notes 2011 -14



Where? Who? Why?



- Parental experience
- Refuse all medical intervention
- Logistical difficulties
- Distrust equipment
- Older children didn't have a hearing screen
- Older children have a hearing loss



?



gaby.kavanagh@rch.org.au

Senior Project Officer, VIHSP

Images: shutterstock, visit Victoria, the fourth revolution

Melbourne
Children's

A world leader
in child and
adolescent
health

